

TXC/TPC Series NEMA Premium Efficiency 3-Phase Motors

1HP thru 500 HP Cast Iron TEFC

• 143T thru 449T

FEATURES

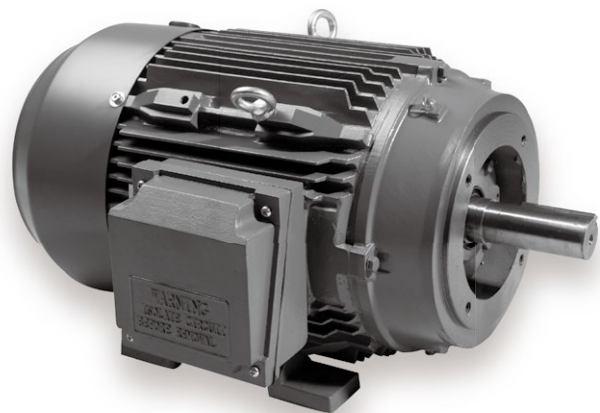
- 208–230/460V/60Hz or 575V/60Hz
- TPC:230/460V/60Hz,200V/208V/400V/416V/60Hz, 190/380V/50Hz
- NEMA Service Factor 1.15/1.25
- Continuous Duty 40°C Ambient
- TEFC (Totally Enclosed Fan Cooled)
- Class F Insulation With Class B Temp Rise
- Cast Iron frames
- NEMA Design B or C
- Ball Bearings
- IP55 Protection
- Up to 445T Available with Integral or Removable Feet

APPLICATIONS

- Pumps
- Compressors
- Fans
- Machine Tools
- Energy saving applications
- Other General Purpose Three Phase Applications

APPLICATIONS(Design C)

- Conveyors
- Gear Reducers
- Applications Requiring Design C Torque



NEMA EPACT & Premium Efficiency 3-Phase Cast Iron TEFC Motors

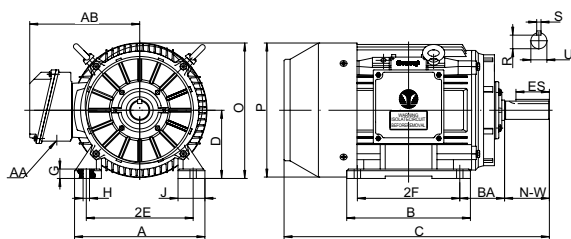


Figure 1 Foot Mounted

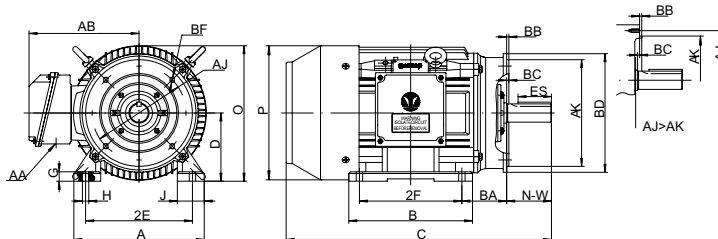


Figure 2 C-Face, Foot Mounted

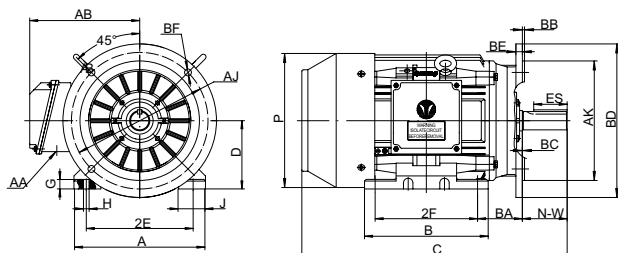


Figure 3 D-Face, Foot Mounted

Overall & Installation Dimensions

Frame	Foot Mounting								Shaft					General					
	A	B	G	J	2E	2F	H	BA	N-W	U	S	R	ES	C	D	O	AA	AB	P
143T	7	5.12	0.55	1.46	5.5	4	0.34	2.25	2.25	0.875	0.188	0.771	1.41	13	3.5	7.01	3/4	5.9	6.93
145T		6.1				5								14					
182T	9	6.1	0.675	1.77	7.5	4.5	0.41	2.75	2.75	1.125	0.25	0.986	1.78	15.5	4.5	8.83	3/4	7.17	8.66
184T		7.09				5.5								16.5					
213T	10.27	7.48	0.71	1.81	8.5	5.5	0.41	3.5	3.38	1.375	0.312	1.201	2.42	18.78	5.25	10.35	1	7.95	10.2
215T		8.98				7								20.28					
254T	12.36	10.35	0.63	2.36	10	8.25	0.53	4.25	4	1.625	0.375	1.416	2.91	24	6.25	12.44	1-1/4	10.1	12.36
256T		12.05				10								25.73					
284T	13.8	12.2	0.985	2.95	11	9.5	0.53	4.75	4.62	1.875	0.5	1.591	3.28	27.37	7	13.9	1-1/2	10.83	13.78
286T		13.7				11								28.87					
284TS	13.8	12.2	0.985	2.95	11	9.5	0.53	4.75	3.25	1.625	0.375	1.416	1.91	26	7	13.9	1-1/2	10.83	13.78
286TS		13.7				11								27.5					
324T	15.4	13	1.12	3.15	12.5	10.5	0.66	5.25	5.25	2.125	0.5	1.845	3.91	29.8	8	15.9	2	13	15.71
326T		14.5				12								31.3					
324TS	15.4	13	1.12	3.15	12.5	10.5	0.66	5.25	3.75	1.875	0.5	1.591	2.03	28.3	8	15.9	2	13	15.71
326TS		14.5				12								29.8					
364T	17.17	14.2	1.24	3.15	14	11.25	0.66	5.88	5.88	2.375	0.625	2.021	4.28	33.47	9	18	3	14.2	18.07
365T		15.2				12.25								34.47					
364TS	17.17	14.2	1.24	3.15	14	11.25	0.66	5.88	3.75	1.875	0.5	1.591	2.03	31.34	9	18	3	14.2	18.07
365TS		15.2				12.25								32.34					
404T																			
405T	19.06	17.44	1.33	3.15	16	13.75	0.81	6.62	7.25	2.875	0.75	2.45	5.65	37.76	10	20	3	15.3	19.96
405TS									4.25	2.125	0.5	1.845	2.78	34.77					
444T	21.93	20.08	1.315	3.94	18	14.5	0.81	7.5	8.5	3.375	0.875	2.88	6.91	44.05					
445T						16.5													
444TS	21.93	20.08	1.315	3.94	18	14.5	0.81	7.5	4.75	2.375	0.625	2.021	3.03	40.3	11	22	3	18	22.01
445TS						16.5													
447T	21.93	28.6	1.315	3.94	18	20	0.81	7.5	8.5	3.375	0.875	2.88	6.91	52.55					
449T						25													
447TS	21.93	28.6	1.315	3.94	18	20	0.81	7.5	4.75	2.375	0.625	2.021	3.03	48.8	11	22	3	18	22.01
449TS						25													
447T*	21.93	33.46	1.46	4.1	18	20	0.81	7.5	8.5	3.375	0.875	2.88	6.91	58.65					
449T*						25													
447TS*	21.93	33.46	1.46	4.1	18	20	0.81	7.5	4.75	2.375	0.625	2.021	3.03	54.91	11	25.37	3	19.7	24.8
449TS*						25													

Note: The frame size with an asterisk *, which external dimensions are slightly different from the conventional frame sizes 447/449.

Frame	C-Face							D-Face					
	AJ	AK	BB	BC	BD	BF	AJ	AK	BB	BC	BD	BE	BF
143-145T	5.875	4.5	0.16	0.12	6.5	4*3/8-16	10.0	9.0	0.25	0	11	0.5	4*0.53
182-184T	7.25	8.5	0.25	0.12	9	4*1/2-13	10.0	9.0	0.25	0	11	0.5	4*0.53
213-215T	7.25	8.5	0.25	0.25	8.95	4*1/2-13	10.0	9.0	0.25	0	11	0.5	4*0.53
254-256T	7.25	8.5	0.25	0.25	10	4*1/2-13	12.5	11.0	0.25	0	14	0.75	4*0.81
284-286T/TS	9	10.5	0.25	0.25	11.25	4*1/2-13	12.5	11.0	0.25	0	14	0.75	4*0.81
324-326T/TS	11	12.5	0.25	0.25	14	4*5/8-11	16.0	14.0	0.25	0	18	0.75	4*0.81
364-365T/TS	11	12.5	0.25	0.25	14	8*5/8-11	16.0	14.0	0.25	0	18	0.75	4*0.81
404-405T/TS	11	12.5	0.25	0.25	15.5	8*5/8-11	20.0	18.0	0.25	0	22	1	8*0.81
444-449T/TS	14	16	0.25	0.25	18	8*5/8-11	20.0	18.0	0.25	0	22	1	8*0.81



XC Series NEMA Premium Efficiency TEFC Motor Design A(BE) Technical Data(60Hz)

HP	Full Load Speed (r/min)	NEMA Frame	Full Load Current			Eff. 100%FL	Power Factor (cosΦ)	Full Load Torque lbf-ft	KVA Code	Locked Rotor		BDT (%FL)	Service Factor	Moment of inertia (lb-ft ²)	Net weight (lbs)
			I _n 230V (A)	I _n 460V (A)	I _n 575V (A)					LRA 230V (A)	LRT (%FL)				
1	3500	143T	3.0	1.5	1.2	77	0.83	1.50	K	22	220	300	1.25	0.0278	35.8
	1740	143T	3.0	1.5	1.2	85.5	0.75	3.02	J	19	280	300	1.25	0.0657	43.2
	1150	145T	3.4	1.7	1.3	82.5	0.68	4.57	H	17	200	270	1.25	0.1153	48.7
1.5	3500	143T	4.0	2.0	1.6	84	0.84	2.25	K	32	220	300	1.25	0.0373	39.6
	1740	145T	4.4	2.2	1.7	86.5	0.75	4.53	L	34	280	300	1.25	0.0885	50.4
	1175	182T	4.8	2.4	1.9	87.5	0.66	6.71	L	35	220	300	1.25	0.4286	85.2
2	3500	145T	5.2	2.6	2.1	85.5	0.85	3.00	L	47	220	300	1.25	0.0470	44.9
	1740	145T	5.6	2.8	2.2	86.5	0.78	6.04	K	42	280	300	1.25	0.1113	53.5
	1175	184T	6.2	3.1	2.5	88.5	0.68	8.94	L	46	220	300	1.25	0.5700	99.1
3	3510	182T	7.2	3.6	2.9	86.5	0.9	4.49	K	61	200	280	1.25	0.1115	73.0
	1750	182T	8.0	4.0	3.2	89.5	0.79	9.01	L	71	220	300	1.25	0.2831	84.5
	1175	213T	8.8	4.4	3.5	89.5	0.72	13.41	K	67	200	300	1.25	1.0268	139.2
5	3510	184T	11.4	5.7	4.6	88.5	0.92	7.48	K	107	200	280	1.25	0.1687	89.5
	1750	184T	12.6	6.3	5.0	89.5	0.83	15.01	K	108	220	300	1.25	0.3669	98.8
	1175	215T	13.8	6.9	5.5	89.5	0.76	22.36	K	105	200	300	1.25	1.2912	154
7.5	3520	213T	17.4	8.7	7.0	89.5	0.9	11.19	J	150	200	280	1.25	0.3479	133
	1750	213T	17.8	8.9	7.1	91.7	0.86	22.52	J	142	200	250	1.25	0.9763	158
	1170	254T	20.8	10.4	8.3	91	0.74	33.68	K	167	200	250	1.25	2.5076	255
10	3520	215T	22.6	11.3	9.0	90.2	0.92	14.93	K	214	200	280	1.25	0.4533	151
	1750	215T	23.8	11.9	9.5	91.7	0.86	30.02	J	189	200	250	1.25	1.1149	177
	1175	256T	27.8	13.9	11.1	91	0.74	44.72	K	222	200	250	1.25	2.7757	276
15	3550	254T	33.6	16.8	13.4	91	0.92	22.20	K	303	200	280	1.25	1.2283	230
	1770	254T	35.4	17.7	14.1	92.4	0.86	44.53	J	285	220	300	1.25	2.2164	249
	1180	284T	37.8	18.9	15.1	91.7	0.81	66.79	L	340	200	280	1.25	5.7264	337
20	3550	256T	45.2	22.6	18.1	91	0.91	29.60	J	379	200	280	1.25	1.3261	268
	1770	256T	46.8	23.4	18.7	93	0.88	59.37	K	424	200	300	1.25	2.7824	299
	1180	286T	49.8	24.9	19.9	91.7	0.82	89.05	K	442	200	280	1.25	6.6386	371
25	3545	284TS	56.8	28.4	22.7	91.7	0.9	37.05	H	415	200	250	1.25	1.8016	313
	1775	284T	58.2	29.1	23.3	93.6	0.86	74.00	K	545	220	300	1.25	3.5714	342
	1180	324T	62.2	31.1	24.9	93	0.81	111.32	K	559	200	280	1.25	9.3474	470
30	3550	286TS	68.0	34.0	27.2	91.7	0.9	44.40	J	598	200	250	1.25	1.9359	339
	1775	286T	69.8	34.9	27.9	93.6	0.86	88.80	K	662	220	300	1.25	4.0399	374
	1180	326T	74.6	37.3	29.8	93	0.81	133.58	K	671	200	280	1.25	10.6666	521
40	3555	324TS	91.0	45.5	36.4	92.4	0.89	59.12	H	689	200	280	1.25	3.3692	453
	1780	324T	93.6	46.8	37.5	94.1	0.85	118.07	H	680	200	220	1.25	7.1424	512
	1185	364T	92.6	46.3	37.0	94.1	0.86	177.36	K	818	220	280	1.15	15.8991	686
50	3560	326TS	111.8	55.9	44.7	93	0.9	73.79	J	939	200	280	1.25	4.0145	511
	1780	326T	115.2	57.6	46.1	94.5	0.86	147.59	J	998	200	220	1.25	8.3396	575
	1185	365T	116.0	58.0	46.3	94.1	0.86	221.69	K	1099	220	280	1.15	18.2263	746
60	3560	364TS	134	67	53	93.6	0.9	88.55	K	1252	200	280	1.15	7.2912	630
	1780	364T	136	68	54	95	0.87	177.11	K	1338	220	280	1.15	16.1862	729
	1185	404T	140	70	56	94.5	0.85	266.03	J	1104	200	230	1.15	28.8796	900
75	3560	365TS	165	82	66	93.6	0.91	110.69	G	1184	200	280	1.15	8.5000	740
	1780	365T	167.2	83.6	67	95.4	0.88	221.38	K	1675	220	280	1.15	18.9957	799
	1185	405T	173	87	69	94.5	0.86	332.54	H	1303	200	230	1.15	34.1302	963
100	3565	405TS	222	111	88	94.1	0.9	147.38	K	2080	220	280	1.15	11.8424	938
	1780	405T	228	114	91	95.4	0.86	295.18	L	2266	220	280	1.15	20.8694	987
	1190	444T	230	115	92	95	0.86	441.53	H	1721	200	250	1.15	76.1733	1454
125	3570	444TS	-	134	107	95	0.92	183.97	K	2512	200	250	1.15	22.3970	1302
	1785	444T	-	138	110	95.4	0.89	367.94	K	2536	250	320	1.15	45.1563	1365
	1190	445	-	147	117	95	0.84	551.91	J	2317	200	250	1.15	84.8372	1584
150	3570	445TS	-	159	127	95	0.93	220.76	H	2652	200	250	1.15	25.9333	1416
	1785	445T	-	165	132	95.8	0.89	441.53	K	3258	250	320	1.15	55.5355	1528
	1190	447T	-	175	140	95.8	0.84	662.29	K	3072	200	250	1.15	102.6656	1917
200	3570	447TS	-	218	171	95.4	0.9	294.35	K	3840	200	250	1.15	30.7095	1737
	1785	447T	-	217	174	96.2	0.9	588.70	H	3411	250	250	1.15	71.6045	1964
	1190	449T	-	233	186	95.8	0.84	883.05	K	4091	200	250	1.15	123.7071	2132
250	3570	449TS	-	271	212	95.8	0.9	367.94	K	4781	200	250	1.15	36.8791	1989
	1785	449T	-	270	216	96.2	0.9	735.88	H	4374	250	250	1.15	85.4436	2237
	1190	449T*	-	291	233	95.8	0.84	1103.82	J	4654	200	250	1.15	150.937	2944
300	3570	449TS	-	326	261	95.8	0.9	441.53	H	5212	200	250	1.15	63.641	2207
	1785	449T	-	324	260	96.2	0.9	883.05	H	5191	250	250	1.15	97.532	2371
	1190	449T*	-	349	279	95.8	0.84	1324.58	J	5585	200	250	1.15	171.998	3286
350	3570	449TS*	-	384	307	95.8	0.89	515.11	H	6150	200	250	1.15	53.676	2796
	1785	449T*	-	387	310	96.2	0.88	1030.23	H	6194	250	250	1.15	118.256	3002
	1190	449T*	-	407	326	95.8	0.84	1545.34	J	6516	200	250	1.15	190.792	3592
400	3570	449TS*	-	439	351	95.8	0.89	588.70	H	7028	200	250	1.15	63.597	3099
	1785	449T*	-	442	354	96.2	0.88	1177.41	H	7078	250	250	1.15	130.047	3177
	1190	449T*	-	465	372	95.8	0.84	1766.11	J	7446	200	250	1.15	219.023	3697
450	3570	449TS*	-	494	395	95.8	0.89	662.29	H	7907	200	250	1.15	68.581	3256
	1785	449T*	-	498	398	96.2	0.88	1324.58	H	7963	250	250	1.15	146.554	3432
500	3570	449TS*	-	549	439	95.8	0.89	735.88	H	8785	200	250	1.15	78.500	3552
	1785	449T*	-	553	442	96.2	0.88	1471.76	H	8848	250	250	1.15	163.051	3673

Note: The frame size and external dimensions with an asterisk *, should be one-to-one correspondence relationship.

T XC Series NEMA Premium Efficiency TEFC Motor Design B Technical Data (60Hz)

HP	Full Load Speed (r/min)	NEMA Frame	Full Load Current			Eff. 100%FL	Power Factor (cosΦ)	Full Load Torque lbf-ft	KVA Code	Locked Rotor		BDT (%FL)	Service Factor	Moment of inertia (lb·ft ²)	Net weight (lbs)
			I _n 230V (A)	I _n 460V (A)	I _n 575V (A)					LRA 230V (A)	LRT (%FL)				
1	3500	143T	3.0	1.5	1.2	77	0.83	1.50	K	22	220	300	1.25	0.0278	35.8
	1740	143T	3.0	1.5	1.2	85.5	0.75	3.02	J	19	280	300	1.25	0.0657	43.2
	1150	145T	3.4	1.7	1.3	82.5	0.68	4.57	H	17	200	270	1.25	0.1153	49.0
1.5	3500	143T	4.0	2.0	1.6	84	0.84	2.25	K	32	220	300	1.25	0.0373	39.6
	1740	145T	4.4	2.2	1.7	86.5	0.75	4.53	L	34	280	300	1.25	0.0886	50.4
	1175	182T	4.8	2.4	1.9	87.5	0.66	6.71	L	35	220	300	1.25	0.4287	87.4
2	3500	145T	5.2	2.6	2.1	85.5	0.85	3.00	L	47	220	300	1.25	0.0470	44.9
	1740	145T	5.6	2.8	2.2	86.5	0.78	6.04	K	42	280	300	1.25	0.1113	55.6
	1175	184T	6.2	3.1	2.5	88.5	0.68	8.94	L	46	220	300	1.25	0.5701	104.6
3	3510	182T	7.2	3.6	2.9	86.5	0.9	4.49	K	61	200	280	1.25	0.1115	75.3
	1750	182T	7.6	3.8	3.1	89.5	0.82	9.01	K	64	220	300	1.25	0.2971	89.2
	1175	213T	8.8	4.4	3.5	89.5	0.72	13.41	K	64	200	250	1.25	1.0708	142
5	3510	184T	11.4	5.7	4.6	88.5	0.92	7.48	J	92	180	250	1.25	0.1688	91.9
	1750	184T	12.4	6.2	4.9	89.5	0.85	15.01	J	92	185	250	1.25	0.3808	103
	1175	215T	13.8	6.9	5.5	89.5	0.76	22.36	J	92	190	240	1.25	1.2916	162
7.5	3510	213T	17.0	8.5	6.8	89.5	0.92	11.23	H	127	180	250	1.25	0.3652	136
	1750	213T	19.0	9.5	7.6	91.7	0.81	22.52	H	127	180	220	1.25	1.0107	160
	1175	254T	20.6	10.3	8.2	91	0.75	33.54	H	127	180	220	1.25	2.5083	255
10	3510	215T	22.4	11.2	8.9	90.2	0.93	14.97	H	162	180	250	1.25	0.4878	163
	1750	215T	25.2	12.6	10.1	91.7	0.81	30.02	H	162	180	220	1.25	1.2516	187
	1175	256T	27.0	13.5	10.8	91	0.76	44.72	H	162	180	220	1.25	2.7766	276
15	3530	254T	33.6	16.8	13.4	91	0.92	22.33	G	232	180	220	1.25	1.2285	251
	1770	254T	34.6	17.3	13.8	92.4	0.88	44.53	G	232	180	220	1.25	2.3774	264
	1180	284T	40.4	20.2	16.1	91.7	0.76	66.79	G	232	180	210	1.25	6.6291	369
20	3530	256T	45.2	22.6	18.1	91	0.91	29.77	G	290	180	220	1.25	1.3265	277
	1770	256T	45.8	22.9	18.3	93	0.88	59.37	G	290	180	220	1.25	2.9431	302
	1180	286T	53.8	26.9	21.5	91.7	0.76	89.05	G	290	180	210	1.25	7.7218	411
25	3530	284TS	56.2	28.1	22.4	91.7	0.91	37.21	G	365	170	200	1.25	1.8022	344
	1770	284T	61.0	30.5	24.4	93.6	0.82	74.21	G	365	180	220	1.25	3.5723	356
	1175	324T	63.8	31.9	25.5	93	0.79	111.79	G	365	150	200	1.25	9.6109	493
30	3530	286TS	67.4	33.7	26.9	91.7	0.91	44.65	G	435	170	200	1.25	1.9980	370
	1770	286T	70.6	35.3	28.2	93.6	0.85	89.05	G	435	180	220	1.25	4.2699	399
	1175	326T	76.4	38.2	30.6	93	0.79	134.15	G	435	150	200	1.25	11.7133	565
40	3550	324TS	90.0	45.0	36.0	92.4	0.9	59.20	G	580	180	210	1.25	3.6853	484
	1770	324T	91.4	45.7	36.6	94.1	0.87	118.74	G	580	180	210	1.25	7.1443	528
	1180	364T	96.0	48.0	38.4	94.1	0.83	178.11	G	580	180	200	1.15	19.0074	762
50	3550	326TS	110.6	55.3	44.3	93	0.91	74.00	G	725	180	210	1.25	4.8563	578
	1770	326T	112.6	56.3	45.0	94.5	0.88	148.42	G	725	180	210	1.25	8.6799	606
	1180	365T	120.0	60.0	48.0	94.1	0.83	222.63	G	725	180	200	1.15	22.1113	839
60	3560	364TS	132	66	53	93.6	0.91	88.55	G	870	140	210	1.15	7.6386	760
	1775	364T	137.6	68.8	55	95	0.86	177.61	G	870	160	210	1.15	16.1908	744
	1185	404T	144	72	57	94.5	0.83	266.03	G	870	180	210	1.15	32.8267	999
75	3560	365TS	165	82.5	66	93.6	0.91	110.69	G	1085	160	210	1.15	9.0204	838
	1775	365T	169.2	84.6	68	95.4	0.87	222.01	G	1085	160	210	1.15	19.0010	818
	1185	405T	180	90	72	94.5	0.83	332.54	G	1085	180	210	1.15	38.7353	1097
100	3560	405TS	224	112	89	94.1	0.89	147.59	G	1450	150	210	1.15	13.6840	1029
	1780	405T	234	117	93	95.4	0.84	295.18	G	1450	200	210	1.15	27.0284	1118
	1190	444T	238	119	94	95	0.83	441.53	G	1450	200	210	1.15	83.6230	1526
125	3560	444TS	276	137	110	95	0.9	184.49	G	1815	160	210	1.15	22.4032	1328
	1785	444T	276	138	110	95.4	0.89	367.94	G	1815	190	200	1.15	45.1689	1380
	1190	445	294	147	117	95	0.84	551.91	G	1815	200	210	1.15	93.5276	1621
150	3565	445TS	324	162	130	95	0.91	221.07	G	2170	160	210	1.15	30.3624	1576
	1785	445T	330	165	132	95.8	0.89	441.53	G	2170	200	200	1.15	57.2815	1572
	1190	447T	344	172	138	95.8	0.85	662.29	G	2170	200	210	1.15	111.3609	1987
200	3570	447TS	432	216	173	95.4	0.91	294.35	G	2900	200	210	1.15	35.1399	1904
	1785	447T	438	219	175	96.2	0.89	588.70	G	2900	200	200	1.15	71.6246	1983
	1190	449T	460	230	184	95.8	0.85	883.05	G	2900	200	210	1.15	136.1224	2246
250	3570	449TS	538	269	215	95.8	0.91	367.94	G	3650	200	210	1.15	45.7522	2241
	1785	449T	546	273	219	96.2	0.89	735.88	G	3650	200	200	1.15	88.9282	2256



NEMA EPACT Efficiency TEFC Motors Technical Data—Design C

HP	Full Load Speed (r/min)	NEMA Frame	Conn	Code	Current at 460V		Torque			Efficiency Full Load (%)
					Full Load (A)	Locked Rotor (A)	Full Load LB-FT	Locked Rotor (%)	Break Down (%)	
1	3450	143T	2Y/Y	N	1.4	15	1.5	245	225	74.0
	1720	143T	2Y/Y	N	1.7	15	3.1	285	200	73.0
	1150	145T	2Y/Y	N	2.0	15	4.6	255	225	72.0
1.5	3450	143T	2Y/Y	M	2.1	20	2.2	240	225	78.0
	1720	145T	2Y/Y	M	2.4	20	4.5	285	200	77.0
	1150	182T	2Y/Y	M	2.6	20	6.8	250	225	72.0
2	3450	145T	2Y/Y	L	2.8	25	3.0	240	225	79.0
	1720	145T	2Y/Y	L	3.1	25	6.1	285	200	78.5
	1150	184T	2Y/Y	L	3.3	25	9.2	250	225	78.5
3	3450	182T	2Y/Y	K	4.0	32	4.5	240	225	80.0
	1720	182T	2Y/Y	K	4.3	32	9.0	270	200	82.5
	1150	213T	2Y/Y	K	4.7	32	13.5	250	225	81.5
5	3450	184T	2Y/Y	J	6.4	46	7.5	240	200	82.0
	1720	184T	2Y/Y	J	6.9	46	15.2	255	200	82.5
	1150	215T	2Y/Y	J	8.3	46	22.6	250	200	82.5
7.5	3450	213T	2Y/Y	H	9.4	64	11.2	215	200	83.0
	1720	213T	2Y/Y	H	9.9	64	22.5	250	200	84.0
	1150	254T	2Y/Y	H	11.2	64	33.8	225	190	86.5
10	3450	215T	2Y/Y	H	12.2	81	15.0	215	190	84.0
	1720	215T	2Y/Y	H	13.0	81	30.5	250	200	84.0
	1150	256T	2Y/Y	H	15.0	81	45.0	225	190	86.5
15	3450	254T	2Δ/Δ	G	18.4	116	22.5	200	180	87.0
	1720	254T	2Δ/Δ	G	19.7	116	45.4	225	200	87.5
	1150	284T	2Δ/Δ	G	20.3	116	66.8	210	190	88.5
20	3450	256T	2Δ/Δ	G	23.1	145	29.8	180	180	86.5
	1720	256T	2Δ/Δ	G	24.7	145	60.0	200	200	87.5
	1150	286T	2Δ/Δ	G	25.8	145	89.4	200	190	88.5
25	3450	284TS	2Δ/Δ	G	28.9	183	37.2	200	190	89.5
	1720	284T	2Δ/Δ	G	29.6	183	74.2	200	190	89.5
	1150	324T	2Δ/Δ	G	31.9	183	111.3	200	190	89.5
30	3450	286TS	2Δ/Δ	G	34.5	218	44.4	200	190	91.0
	1720	286T	2Δ/Δ	G	35.5	218	89.1	200	190	91.0
	1150	326T	2Δ/Δ	G	38.0	218	133.6	200	190	91.0
40	3450	324TS	2Δ/Δ	G	46.5	290	59.1	200	190	90.2
	1720	324T	2Δ/Δ	G	47.1	290	118.7	200	190	91.0
	1150	364T	2Δ/Δ	G	48.4	290	178.1	200	190	91.0
50	3450	326TS	2Δ/Δ	G	58.4	363	73.8	200	190	91.0
	1720	326T	2Δ/Δ	G	59.2	363	148.4	200	190	91.7
	1150	365T	2Δ/Δ	G	60.5	363	222.6	200	190	91.0
60	3450	364TS	2Δ/Δ	G	64.5	435	88.6	200	190	91.7
	1720	364T	2Δ/Δ	G	69.4	435	177.6	200	190	91.7
	1150	404T	2Δ/Δ	G	70.2	435	266.0	200	190	91.7
75	3450	365TS	2Δ/Δ	G	84.3	543	110.0	200	190	91.7
	1720	365T	2Δ/Δ	G	86.2	543	222.0	200	190	92.4
	1150	405T	2Δ/Δ	G	87.7	543	333.0	200	190	91.7
100	3450	405TS	2Δ/Δ	G	100.2	725	147.2	200	190	91.8
	1720	405T	2Δ/Δ	G	114.0	725	295.2	200	190	92.4
	1150	444T	2Δ/Δ	G	116.0	725	445.2	200	190	91.7
125	3450	444TS	2Δ/Δ	G	137.0	908	183.7	200	190	92.4
	1720	444T	2Δ/Δ	G	141.0	908	368.3	200	190	92.4
	1150	445T	2Δ/Δ	G	145.0	908	556.5	200	190	92.4
150	3450	445TS	2Δ/Δ	G	164.0	1085	220.4	200	190	93.0
	1720	445T	2Δ/Δ	G	169.0	1085	442.0	200	190	93.0
	1150	447T	2Δ/Δ	G	170.0	1085	668.0	200	190	92.4
200	3450	447TS	Δ	G	215.0	1450	294.0	200	190	93.6
	1720	447T	Δ	G	223.0	1450	589.3	200	190	93.0



PC Series NEMA Super Premium Efficiency TEFC Motor Design BE Technical Data(3-Voltage)

No.	Model	Frame	HP	Super Premium 60Hz(IE4)									Nema Premium 60Hz(IE3)								Nema Premium 50Hz(IE3)							DES	Moment of inertia (lb·ft ²)	Net weight (lbs)		
				RPM	SF	Hz	FLA 230V	FLA 460V	KVA Code	PF	Eff	RPM	SF	Hz	FLA 200V	FLA 208V	FLA 400V	FLA 416V	KVA Code	PF	Eff	RPM	SF	Hz	FLA 190V	FLA 380V	KVA Code				PF	EFF
1	TPC143T1U2E	143T	1	3510	1.25	60	3.0	1.5	L	0.76	82.5	3510	1.25	60	3.0	2.9	1.5	1.4	J	0.93	77	2870	1.0	50	3.4	1.7	H	0.83	80.7	BE	0.0325	42.1
2	TPC143T1.5U2E	143T	1.5	3510	1.25	60	4.0	2.0	K	0.82	85.5	3510	1.25	60	4.4	4.2	2.2	2.1	J	0.87	84	2870	1.0	50	4.7	2.4	H	0.87	82.8	BE	0.0427	45.4
3	TPC145T2U2E	145T	2	3510	1.25	60	5.2	2.6	K	0.83	86.5	3510	1.25	60	5.8	5.6	2.9	2.8	H	0.87	85.5	2860	1.0	50	6.4	3.2	H	0.84	84.2	BE	0.0496	49.5
4	TPC143T1U4E	143T	1	1740	1.25	60	3.0	1.5	L	0.73	85.5	1740	1.25	60	3.2	3.1	1.6	1.5	J	0.79	85.5	1410	1.0	50	3.4	1.7	J	0.81	82.5	BE	0.0693	47.8
5	TPC145T1.5U4E	145T	1.5	1740	1.25	60	4.2	2.1	K	0.76	87.5	1740	1.25	60	4.6	4.4	2.3	2.2	J	0.81	86.5	1410	1.0	50	4.8	2.4	H	0.84	84.2	BE	0.0935	55.1
6	TPC145T2U4E	145T	2	1740	1.25	60	5.6	2.8	L	0.76	88.5	1740	1.25	60	6.0	5.8	3.0	2.9	J	0.83	86.5	1410	1.0	50	6.6	3.3	J	0.81	85.3	BE	0.1160	62.9
7	TPC145T1U6E	145T	1	1150	1.25	60	3.6	1.8	J	0.62	84	1150	1.25	60	3.6	3.5	1.8	1.7	H	0.73	82.5	920	1.0	50	4.0	2.0	H	0.72	78.9	BE	0.1217	53.6
8	TPC182T3U2E	182T	3	3515	1.25	60	7.0	3.5	J	0.91	88.5	3515	1.25	60	8.0	7.7	4.0	3.8	H	0.93	86.5	2875	1.0	50	8.6	4.3	H	0.92	85.9	BE	0.1177	84.1
9	TPC184T5U2E	184T	5	3510	1.25	60	11.4	5.7	J	0.92	89.5	3510	1.25	60	13.6	13.1	6.8	6.5	G	0.89	88.5	2865	1.0	50	14.4	7.2	H	0.90	87.9	BE	0.1782	101.1
10	TPC182T3U4E	182T	3	1750	1.25	60	7.5	3.7	J	0.83	91	1750	1.25	60	8.3	8.0	4.2	4.0	H	0.87	89.5	1435	1.0	50	9.0	4.5	H	0.88	86.7	BE	0.3135	97.5
11	TPC184T5U4E	184T	5	1750	1.25	60	12.4	6.2	J	0.83	91	1750	1.25	60	14.2	13.7	7.1	6.8	H	0.85	89.5	1430	1.0	50	15.0	7.5	H	0.85	88.4	BE	0.4018	111.8
12	TPC182T1.5U6E	182T	1.5	1175	1.25	60	4.8	2.4	L	0.66	88.5	1175	1.25	60	4.8	4.6	2.4	2.3	J	0.77	87.5	970	1.0	50	5.4	2.7	H	0.78	81.1	BE	0.4523	96.3
13	TPC184T2U6E	184T	2	1175	1.25	60	6.2	3.1	L	0.67	89.5	1175	1.25	60	6.4	6.2	3.2	3.1	J	0.76	88.5	970	1.0	50	7.0	3.5	H	0.79	82.5	BE	0.6016	112.6
14	TPC213T7.5U2E	213T	7.5	3515	1.25	60	16.7	8.4	H	0.93	90.2	3515	1.25	60	19.6	18.8	9.8	9.4	G	0.92	89.5	2875	1.0	50	20.8	10.4	G	0.92	89.2	BE	0.4037	149.6
15	TPC215T10U2E	215T	10	3515	1.25	60	22.4	11.2	J	0.91	91.7	3515	1.25	60	26.6	25.6	13.3	12.8	G	0.90	90.2	2875	1.0	50	28.0	14.0	G	0.90	90.1	BE	0.5147	173.4
16	TPC213T7.5U4E	213T	7.5	1760	1.25	60	20.4	10.2	J	0.75	92.4	1760	1.25	60	22.0	21.2	11.0	10.6	G	0.80	91.7	1450	1.0	50	23.8	11.9	G	0.80	89.6	BE	1.0664	170.3
17	TPC215T10U4E	215T	10	1760	1.25	60	26.8	13.4	H	0.76	92.4	1760	1.25	60	29.6	28.5	14.8	14.2	G	0.79	91.7	1450	1.0	50	32.0	16.0	G	0.78	90.4	BE	1.3208	196.8
18	TPC213T3U6E	213T	3	1175	1.25	60	8.8	4.4	J	0.71	90.2	1175	1.25	60	9.4	9.0	4.7	4.5	H	0.77	89.5	965	1.0	50	10.2	5.1	G	0.79	84.4	BE	1.1300	153.2
19	TPC215T5U6E	215T	5	1175	1.25	60	13.6	6.8	J	0.76	90.2	1175	1.25	60	15.0	14.4	7.5	7.2	H	0.80	89.5	965	1.0	50	16.2	8.1	G	0.81	86.5	BE	1.3631	173.4
20	TPC254T15U2E	254T	15	3550	1.25	60	32.9	16.5	K	0.92	92.4	3550	1.25	60	38.0	36.5	19.0	18.3	H	0.93	91	2940	1.0	50	40.0	20.0	H	0.93	91.2	BE	1.5024	279.2
21	TPC256T20U2E	256T	20	3550	1.25	60	44.2	22.1	L	0.92	92.4	3550	1.25	60	50.8	48.8	25.4	24.4	K	0.93	91	2940	1.0	50	53.5	26.8	K	0.92	91.9	BE	1.6381	308.8
22	TPC256T25U2E	256T	25	3550	1.25	60	54.8	27.4	K	0.92	93	3550	1.25	60	62.8	60.4	31.4	30.2	J	0.93	91.7	2940	1.0	50	66.6	33.3	H	0.92	92.4	BE	1.7807	321.9
23	TPC254T15U4E	254T	15	1770	1.25	60	35.3	17.6	K	0.85	93.6	1770	1.25	60	39.0	37.5	19.5	18.7	K	0.90	92.4	1460	1.0	50	41.7	20.9	H	0.89	91.5	BE	2.5088	284.6
24	TPC256T20U4E	256T	20	1770	1.25	60	47.4	23.7	L	0.84	94.1	1770	1.25	60	52.6	50.6	26.3	25.3	J	0.88	93	1460	1.0	50	56.3	28.1	H	0.87	92.1	BE	3.1058	321.9
25	TPC254T7.5U6E	254T	7.5	1175	1.25	60	19.9	10.0	H	0.77	91.7	1175	1.25	60	22.2	21.4	11.1	10.7	G	0.80	91	965	1.0	50	23.7	11.9	G	0.82	88	BE	2.6469	274
26	TPC256T10U6E	256T	10	1175	1.25	60	27.6	13.8	K	0.73	92.4	1175	1.25	60	30.4	29.2	15.2	14.6	H	0.78	91	965	1.0	50	32.6	16.3	H	0.78	89	BE	3.2995	311.8
27	TPC284TS25U2E	284TS	25	3550	1.25	60	57.2	28.6	K	0.88	93	3550	1.25	60	64.2	61.8	32.1	30.9	J	0.91	91.7	2940	1.0	50	68.5	34.2	J	0.90	92.4	BE	1.9018	364.8
28	TPC286TS30U2E	286TS	30	3550	1.25	60	66.1	33.1	J	0.91	93	3550	1.25	60	76.0	73.0	38.0	36.5	G	0.93	91.7	2940	1.0	50	80.5	40.3	G	0.91	92.8	BE	2.1735	395.2
29	TPC286TS40U2E	286TS	40	3550	1.25	60	91.2	45.6	K	0.88	93.6	3550	1.25	60	102.4	98.5	51.2	49.2	J	0.91	92.4	2940	1.0	50	108.8	54.4	H	0.89	93.3	BE	2.5631	427.9
30	TPC284T25U4E	284T	25	1770	1.25	60	59.9	30.0	L	0.83	94.5	1770	1.25	60	65.4	62.9	32.7	31.4	H	0.88	93.6	1460	1.0	50	70.1	35.1	J	0.87	92.6	BE	4.6148	419.2
31	TPC286T30U4E	286T	30	1770	1.25	60	70.0	35.0	K	0.85	94.5	1770	1.25	60	76.9	73.9	38.4	37.0	J	0.90	93.6	1460	1.0	50	82.6	41.3	J	0.89	93	BE	5.1094	450.9
32	TPC284T15U6E	284T	15	1180	1.25	60	39.9	19.9	L	0.76	93	1180	1.25	60	42.6	41.0	21.3	20.5	J	0.83	91.7	975	1.0	50	46.0	23.0	J	0.82	90.3	BE	6.9955	396.9
33	TPC286T20U6E	286T	20	1180	1.25	60	53.6	26.8	L	0.75	93	1180	1.25	60	57.6	55.4	28.8	27.7	J	0.82	91.7	975	1.0	50	62.3	31.2	H	0.80	91.2	BE	8.1485	436.9
34	TPC324TS40U2E	324TS	40	3560	1.25	60	91.6	45.8	L	0.87	93.6	3560	1.25	60	102.3	98.4	51.2	49.2	K	0.91	92.4	2945	1.0	50	108.8	54.4	K	0.89	93.3	BE	4.1108	533.5
35	TPC326TS50U2E	326TS	50	3560	1.25	60	112.1	56.1	L	0.89	94.1	3560	1.25	60	125.6	120.8	62.8	60.4	J	0.92	93	2945	1.0	50	133.2	66.6	J	0.91	93.7	BE	4.9029	588
36	TPC324T40U4E	324T	40	1775	1.25	60	95.9	47.9	K	0.82	95	1775	1.25	60	105.8	101.7	52.9	50.9	H	0.87	94.1	1470	1.0	50	113.6	56.8	G	0.85	93.5	BE	7.7174	559.1
37	TPC326T50U4E	326T	50	1775	1.25	60	113.9	56.9	H	0.86	95.4	1775	1.25	60	128.2	123.3	64.1	61.6	H	0.89	94.5	1470	1.0	50	136.8	68.4	G	0.88	93.9	BE	9.1594	632.6
38	TPC324T25U6E	324T	25	1180	1.25	60	60.9	30.5	L	0.82	94.1	1180	1.25	60	67.8	65.2	33.9	32.6	J	0.85	93	975	1.0	50	72.5	36.3	J	0.85	91.8	BE	10.1419	522.5
39	TPC326T30U6E	326T	30	1180	1.25	60	71.3	35.6	L	0.84	94.1	1180	1.25	60	79.1	76.1	39.6	38.0	K	0.88	93	975	1.0	50	84.6	42.3	J	0.87	92.2	BE	12.3607	593.2
40	TPC364T40U6E	364T	40	1180	1.15	60	94.6	47.3	K	0.83	95	1180	1.15	60	106.0	101.9	53.0	51.0	H	0.86	94.1	975	1.0	50	112.6	56.3	H	0.87	92.9	BE	20.0579	803.7
41	TPC365T50U6E	365T	50	1180	1.15	60	115.6	57.8	K	0.85	95	1180	1.15	60	130.4	125.4	65.2	62.7	H	0.88	94.1	975	1.0	50	138.4	69	H	0.88	93.4	BE	23.3331	877.3

IEC MOTOR